

General

Flanders B-1 Frames are permanent holding frames for field or OEM assembly of built-up HEPA/ULPA filter banks. They may be used to hold Alpha 95, Alpha Cell and Alpha 2000 filters with gasketed frames. Standard sizes include the three widely-used filter face sizes: 24 in. x 24 in., 24 in. x 12 in. and 12 in. x 24 in., as well as less common sizes: 24 in. x 30 in. and undersize versions of the common face sizes. Separate locking arm and screw assemblies are used to retain the nominal 12 in. depth filter casings. The entire assembly will have the same efficiency as the filters themselves without leaks or bypass when the filters and frames are installed as recommended by Flanders. Clips to hold prefilters are available.

Construction

B-1 Frames are constructed of all-welded sealing surface and an intermittently welded sides and 14 ga. galvanized construction. Factory-drilled alignment holes on each side facilitate positioning of the frames for easy filter bank assembly. Welded to the inside of the frame on the bottom and both sides are alignment bars. These bars position the filter properly so that its gasket will mate with the sealing flange around the periphery of the filter frame.

Four stainless steel removable locking arm and screw assemblies are furnished with each frame, and they are easily adjusted to hold the filter in place and press its gasket onto the flange of the frame. Swing arm designs are Astr frame to hold the prefilter.

Installation Considerations

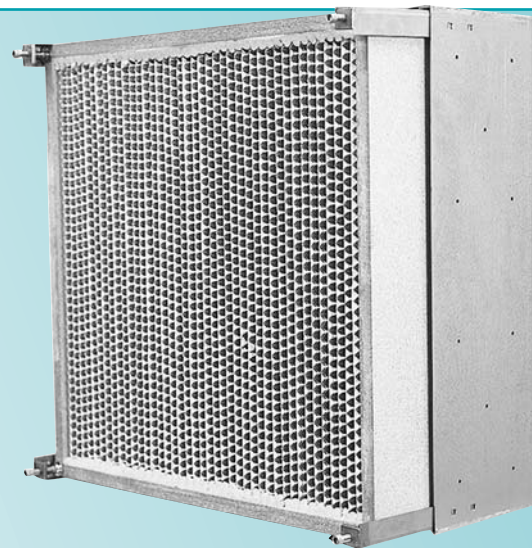
B1 Frames may be installed for service from the air entering (upstream) side or the air leaving (downstream) side. Filter installation and removal are greatly facilitated if at least 36 inches of service clearance is provided. If the HEPA/ULPA filter bank is arranged for air entering side service, this clearance space may be shared with downstream-serviced ASHRAE-rated prefilters. Optional prefilter clips may be placed on the frame's sealing flange. Prefilters held by these clips must be serviced from the side opposite that used for HEPA/ULPA service.

Optional Construction

- Type 304 stainless steel
- Aluminum, 0.08 in. thick
- Custom sizes
- Frames for nominal 6 inch deep filters
- B1S - Swing Bolt Design

Important Features

- All-welded 14 gauge galvaneal steel construction for corrosion resistance and rigidity
- Stainless steel locking arm and screw assemblies secure and seal the HEPA filter
- Factory-drilled alignment holes facilitate field assembly of built-up filter banks.
- Optional prefilter assembly is available for direct attachment to the frame

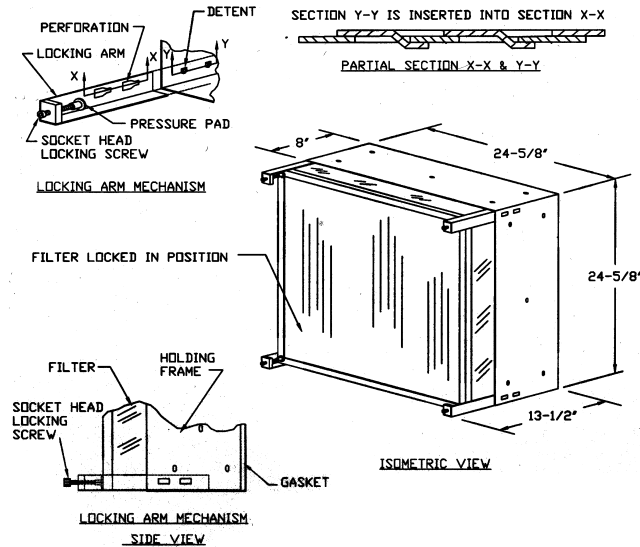


Alpha B-1 Frame Usage, Dimensions and Weights

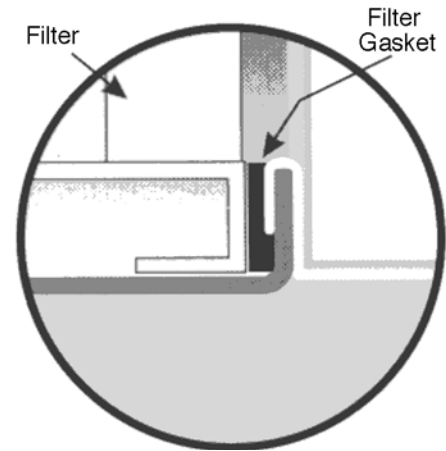
Model Number*	Actual Frame Dimensions				Actual Filter Dimensions		
	Height (inches)	Width (inches)	Depth (inches)	Depth w/Filter	Height (inches)	Width (inches)	Depth (inches)
B1*GGF	24-5/8	24-5/8	8	13-3/4	24	24	11-1/2
B1*GCF	24-5/8	12-5/8	8	13-3/4	24	12	11-1/2
B1*CGF	12-5/8	24-5/8	8	13-3/4	12	24	11-1/2
B1*GNF	24-5/8	30-5/8	8	13-3/4	24	30	11-1/2
B1*YYF	24	24	8	13-3/4	23-3/8	23-3/8	11-1/2
B1*YUF	24	12	8	13-3/4	23-3/8	11-3/8	11-1/2
B1*UYF	12	24	8	13-3/4	11-3/8	23-3/8	11-1/2

* Insert material of construction: GLV for galvaneal Steel, 304 for type 304 stainless steel, ALUM for aluminum.

Note: for 5-7/8 in. deep filter, substitute "D" as a suffix in lieu of "F"



B-1 Gasket Seal



Guide Specifications

1.0 General

1.1 Permanent holding frames for HEPA/ULPA filters shall be B-1 models as manufactured Flanders.

2.0 Frame Construction

2.1 Frames shall be constructed of 14 gauge galvaneal steel, 304 stainless steel, or .080 in. aluminum with factory-drilled alignment holes on each side to facilitate field erection of the filter bank.

2.2 Depth of frame shall be 8 inches. Furnish alignment bars on bottom and two sides of the interi-

or of the frame, and a sealing surface to mate with the gasket on the filter.

2.3 Furnish four stainless steel locking arm and screw assemblies, one for each corner, to support the filter and to compress its gasket properly against the sealing flange for a leakfree installation.

3.0 Installation

3.1 Install frames in accordance with Flanders s written recommendations.

Flanders/FFI[®]

Flanders Filters, Inc.
531 Flanders Filter Road
Washington, NC 27889

Phone: (252) 946-8081
Toll Free: (800) 637-2803
Fax: (252) 946-3425

Website: www.flanderscorp.com

REPRESENTED BY: